



# 2010 Rehabilitation & Transition Conference

## Today's challenges, tomorrow's choices


March 24 - 26 [Conference website](#)

**Hotel Accommodations starting at \$68!**

The American Club • Kohler, Wis.



## WEDNESDAY, MARCH 24 AGENDA

9:00 AM	<b>Registration</b> Great Lakes Foyer
9:00 AM - 5:30 PM	<b>Exhibits:</b> Great Lakes Foyer & Great Bay Foyer Visit each exhibitor to become eligible for a prize drawing!
10:00 AM - 11:45 AM Great Lakes Ballroom	<u><a href="#">Aging &amp; Disability Policy Forum / Invited speakers and panelists:</a></u> 2010 Gubernatorial candidates (invited); Rep. Peggy Krusick, Democratic Chair of the Assembly's Aging and Long Term Care Committee; Rep. Kitty Rhoades, Assembly Aging and Long Term Care Committee; Susan Crowley, Administrator, Wisconsin Department of Health Services, Division of Long Term Care; Dennis Harkins; Lynn Breedlove, Executive Director, Disability Rights Wisconsin
12:00 - 12:45 PM	 <b>Opening Keynote • Dennis Harkins • Box Lunch</b> <b>"Why Family Care and IRIS Must Succeed"</b> In 1997 Dennis Harkins resigned as State Director of Developmental Disabilities Services to oppose the implementation of the original proposal to develop Family Care as a statewide, privatized initiative to be run by national health care organizations. He is now one of the strongest advocates for the opportunities that Family Care and its kid sister IRIS offer to people with disabilities, elders, families, and service providers, if collectively we do it right. What must we do to assure that Family Care and IRIS fulfill their promise?

1:00 - 2:15 PM **Concurrent Educational Sessions & Room Locations (TBD)**

**Register online** [www.rfw.org](http://www.rfw.org)

2:15 - 2:45 PM **REFRESHMENT BREAK**

2:45 - 4:00 PM **Concurrent Educational Sessions & Room Locations (TBD)**

4:00 - 5:30 PM **EXHIBIT RECEPTION in the Great Lakes Foyer • Get passport stickers to win prizes!**

### 1:00 - 2:15 PM WEDNESDAY MARCH 24 - CONCURRENT SESSIONS

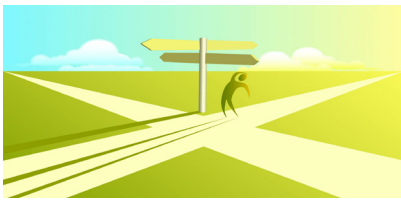
**SESSION 1 • QPR Training for Suicide Prevention** • Susan Howell and Pat Derer, [HOPES](#) • Suicide is often a preventable death. Session attendees will learn QPR training (Question, Persuade, Refer) to save lives and reduce suicidal behaviors by providing innovative, practical and proven suicide prevention training. **BEHAVIORAL HEALTH Room TBD**

**SESSION 2 • Job Development Mentor Project** • Bill Duerkop, [Ventures Unlimited](#); Shannon Munn, [Pathways to Independence](#); Greg Sheehan, [Riverfront Inc.](#); Dedra Hafner; Sue McKeown, [Careers Industries](#) • A panel of job developers and their mentors will discuss job development techniques that helped them place people successfully in higher paying jobs. Attendees will take away specific techniques to enhance job development opportunities. **EMPLOYMENT Room TBD**

**SESSION 3 • "I Always Wanted to Be the Boss, Now What?"** • John Wilberding, [2-A-T Solutions](#) • This interactive, high-energy session will provide supervisors and managers with practical tools to increase their management skills set. The session is divided into four 20 minute sections and combines participant experience and research-based management practices. **MANAGEMENT Room TBD**

**SESSION 4 • How to Create a Student's Transition Plan for the Future** • Lori Turim, CESA 1, Cheri and Eric Sylla • Learn how to develop a transition plan for students with disabilities as they move from high school to the adult world using the transition requirements defined by IDEA 2004. Discover how students, parents, and teachers can work collaboratively to develop measurable post-secondary goals, a course of study, and a coordinated set of activities to include in the IEP. **TRANSITION Room TBD**

**Hotel Accommodations starting at \$68! • The American Club • Kohler, Wis.**



# 2010 Rehabilitation & Transition Conference

Today's challenges, tomorrow's choices

March 24 - 26 [Conference website](#)



**1:00 - 2:15PM WEDNESDAY MARCH 24 - CONCURRENT SESSIONS**

**SESSION 5 • Listening Session on the implementation of Family Care** • Susan Crowley, Administrator of Long Term Care, Wisconsin Department of Health Services • After reporting on the status of Family Care expansion, Ms. Crowley will hold a listening session for Family Care members and providers • **LEGISLATIVE Room TBD**

**SESSION 6 • The Intersection of Multiculturalism & Ethics** • DeLeana Strohl, Ph.D., CRC, [University of Wisconsin-Stout](#); Corey Harland, [University of Wisconsin-Stout](#). Understand the disparities in outcomes between minorities and non-minorities, and how counselors make ethical or unethical decisions based on their own values, which are often contradictory to the values of their clients. The session will include a discussion of the ethical principles that guide the profession and will assist counselors in making appropriate decisions when working with diverse populations. **ETHICS Room TBD**

**SESSION 7 • The Acceptability Factor - Using the iPhone as Assistive Technology** • Laura Plummer, MS, CRC, ATP, [University of Wisconsin-Stout](#) • Learn how to use the latest technology gadgets to create excitement and interest in assistive technology for a wide spectrum of people with disabilities. Attendees will gain insight into these devices, their high acceptability factors, and how this technology applies to their field through case studies and scenarios. Plus, funding strategies to acquire these new assistive technology devices. **HOT TOPICS Room TBD**

**WED. MARCH 24 - 2:45 - 4:00 PM**

**SESSION 8 • Dual Disorders Incorporated as a Standard of Treatment in CSP's and Community Treatment Programs** • Barb Culver, MS LPC SAC • This session explores the act of balancing treatment of people with prominent and persistent mental health disorders and alcohol and substance issues within community treatment systems. Attendees will learn the importance of treating each simultaneously, the impact of one issue on the other for the client and the professional staff, and how this can be incorporated into regular contacts and awareness within the treatment staff. **BEHAVIORAL HEALTH Room TBD**

**SESSION 9 • Provider Networks in Family Care Programs** • Amy Bell; Cathy Derezinski; Jessica Brooks, MS, CRC, [Care Wisconsin](#) • A panel of Employment Coordinators from Managed Care Organizations around the state will explain their role and responsibilities for providing integrated employment for individuals who are participants in Family Care and IRIS. This session will discuss the formation of provider networks (including how providers become a member of such a network and how they can sustain this membership through the delivery of high quality services). **EMPLOYMENT Room TBD**

**SESSION 10 • Leadership in the New Millennium** • Deb Henderson-Guenther, [WRA](#); Susie Eberhard, University of Wisconsin-Stout; Beverlee Stafford, National Rehabilitation Association • Current and past national and state rehabilitation association leaders will explain the role of leadership development, strategies to grow leaders, and methods for succession planning. **MANAGEMENT Room TBD**

**SESSION 11 • Age Appropriate Assessment** • Robert Greene, CESA #4; Cynthia Cain, DWD; Gregg Schneider, Beloit Memorial High School; Darla Burton, CESA #3 • Learn how Wisconsin's model can be used to ensure measurable post-secondary goals are based on age-appropriate assessment. The sessions will present the model and how it can be used to identify tools that are available, and answer questions as to which tools may be used to best identify a student strengths, interests, preference, and present capabilities individually, and across all areas. **TRANSITION Room TBD**

**SESSION 12 • The Role of Disability Benefit Specialists in Wisconsin** • This session has been CANCELED.

**SESSION 13 • Grant Writing and Beyond: Philanthropy in 2010** • Deborah Fugenschuh, [Donors Forum of Wisconsin](#) • Learn about the current and future landscape of charitable giving, government funding and other vehicles for revenue generation by nonprofits. This session will focus on the grant writing in particular as a tool for securing philanthropic support. In addition, attendees will understand how to build relationships with funders and the increasing importance of individual giving in the nonprofit fundraising portfolio, in addition to the philanthropic and nonprofit sector in Wisconsin. **MANAGEMENT Room TBD**

**Continued >**


**Hotel Accommodations starting at \$68!** • The American Club • Kohler, Wis.

**WED. MARCH 24 - 2:45 - 4:00 PM**

**SESSION 14 • IRIS, Family Care, and Self-Directed Supports - A Great**

**Time for Providers •** Dennis Harkins • There has been concern by service providers about the expansion of long-term care reform through Family Care and more recently IRIS. The end of waiting lists is an obvious victory that providers join with others to celebrate, but there is also another great opportunity that service providers are just beginning to understand – self-directed supports. This session will facilitate a discussion with service providers about how SDS frees service providers to become even more creative and expansive in meeting the needs of those they serve. **HOT TOPICS Room TBD**

## THURSDAY, MARCH 25 AGENDA

8:00 AM - 5:00 PM	<b>Exhibits:</b> Great Lakes Foyer & Great Bay Foyer Visit each exhibitor to become eligible for a prize drawing!
8:00 - 8:45 AM Registration & Breakfast Buffet  Great Lakes Ballroom	<b>8:45 - 10:00 AM Keynote Speaker <a href="#">Chad Crittenden</a></b> “Discover the Will to Survive”  By relating his story from surgery to the CBS television series “Survivor,” Chad will share his personal, motivational perspective about overcoming obstacles in life.  Chad will illustrate his story and outline the tools that helped him overcome adversity, survive cancer and excel on CBS’ Survivor. While discussing the importance of utilizing our own circumstances, taking risks, and discovering new opportunities to grow, Chad relays his message and personal experiences to relate important life lessons in perseverance.

10:15 - 11:30 AM **Concurrent Educational Sessions & Room Locations**

[Register online](#)

Noon - 1:15 PM **LEADERSHIP AWARDS & LUNCHEON**

1:30 - 2:45 PM **Concurrent Educational Sessions & Room Locations**

2:45 - 3:15 PM **REFRESHMENT BREAK**

3:15 - 4:30 PM **Concurrent Educational Sessions & Room Locations**

7:30 PM - 12:00 AM **“Surviving the 2010’s” THEME PARTY Great Lakes Ballroom**

### 10:15 - 11:30 AM THURSDAY MARCH 25 - CONCURRENT SESSIONS

**SESSION 15 • [Ambassador Program](#)** • Nancy Ward, [VIP Services](#); Ursula Norwood, [RCS Empowers](#) • This panel session will demonstrate a speakers’ bureau training program that provides people with disabilities with the skills needed to speak confidently in public about their lives, the importance of employment, and disability awareness in the community. **EMPLOYMENT Room TBD**

**SESSION 16 • The Customized Self-Employment Tool Kit** • Shannon Munn, [Pathways to Independence](#); Deb Henderson-Guenther, [Wisconsin Client Assistance Program](#); Allison Gordon, DVR • Customized self-employment is an emerging vocational option for people with significant disabilities in Wisconsin. However, there are very few tools to guide prospective business owners with disabilities and their teams in the process of creating a sustainable and gainful self-employment venture. In this session, the presenters will introduce DVR’s new Customized Self-Employment Toolkit and explain how it can be used by prospective business owners, DVR counselors and vocational service providers. **EMPLOYMENT Room TBD**

## 10:15 - 11:30 AM THURSDAY MARCH 25 - CONCURRENT SESSIONS

CONTINUED >

**SESSION 17 • Supervision in a Distributed Work Environment** • John Galetka and Nicki Boser, [The Mentor Network](#)  
• Attendees will learn the start-up and background history of The Mentor Network's Day Service program, how the program is staffed and supervised, the challenges of matching and supervising one-to-one staff with consumers and the challenges of finding community employment for those served. Also discussed, the role of transitioning people with disabilities from the school system to community based services; the transition from consumer services being County-funded to MCO-funded; and visions for the future. **MANAGEMENT Room TBD**

**SESSION 18 • Health Matters: Supporting the Integration of Health into the Transition Process** • Amy Whitehead, [The Waisman Center](#) • The Community on Transition Practice Group on Health has developed materials to assist youth, and those who support them, to include health as part of the transition process. The audience will learn about strategies and resources available to them, including a Health Care Checklist, training manual and pocket guide. **TRANSITION Room TBD**

**SESSION 19 • DVR and DPI Administrative Updates** • Charlene Dwyer, DVR; Stephanie Petska, DPI • Learn how DVR and DPI are managing its service staffing, case aids budget, and wait list in these challenging economic times, utilizing Economic Recovery and Reinvestment funds to increase employment opportunities and outcomes. **LEGISLATIVE Room TBD**

**SESSION 20 • Ethics is What Happens When No One is Looking** • Linda Hedenblad, MSE, CRC, SIUC TACE, [Region V TACE Southern Illinois University](#) • Learn about the variety of ethical issues transition professionals face. Using the CRC Code of Ethics as a guide, attendees will also explore common thinking traps that might lead to unethical behavior. **ETHICS Room TBD**

**SESSION 21 • Learning How to Listen - Another Look at Behavior of People with Autism** • Carol Gray, [The Gray Center for Social Learning and Understanding](#) • Using lecture, activities, and case examples, this presentation takes another look at "problem behavior" with some surprising food for thought and positive practical ideas. It is for anyone who has ever wondered why students/clients often thrive with one teacher or therapist, only to struggle with the next. Participants will leave with access to a new perspective and along with it, a wealth of practical new ideas. **HOT TOPICS Room TBD**

### THURS. MARCH 25 - 1:30 - 2:45PM

**SESSION 22 • Alternative Treatments in Mental Health** • Dr. David Mays M.D., Ph.D. • This session will focus on the major alternative treatments available for mental health issues. We will discuss safety and efficacy issues, as well as ways that practitioners can use the power of placebos and alternative approaches to help their clients feel better. Specific areas include herbal, vitamin, and other nutritional supplements, hypnosis, and body work. **BEHAVIORAL HEALTH Room TBD**

**SESSION 23 • Demand-Side Factors Related to Employment of People with Disabilities** • Fong Chan, Ph.D., University of Wisconsin-Madison • Understand the concept of demand-side employment and job placement for people with disabilities. Attendees will learn about recent research related to: 1) attitudes toward people with disabilities and people from racial and ethnic minority backgrounds 2) analysis of workplace discrimination based on EEOC data, and 3) employers' perspective on the employment of people with disabilities. The audience will learn how this information can be used to formulate targeted strategies and policies for increasing employment opportunities for people with disabilities. **EMPLOYMENT Room TBD**

**SESSION 24 • Supervisory Rights and Responsibilities During a Union Organizing Campaign** • Thomas Mackenzie, [Lindner & Marsack, S.C.](#) • This session will provide managers and supervisors with a working knowledge of the "do's and don'ts" that apply in a union organizing drive. In addition to addressing conduct that constitutes a violation of the National Labor Relations Act, the program will also explore what a company should say to ensure that employees considering unionization have both sides of the story. **MANAGEMENT Room TBD**

**SESSION 25 • Building Blocks to Successful College Transition** • Marty Bledsoe, Carroll University; Kay Gruder, Successful College Parenting; Laurie Peterson, University of Wisconsin-Milwaukee • This lively, interactive session is targeted towards rehabilitation professionals who work with students with disabilities preparing for college. It will include discussions to identify global transition issues to build a high school curriculum template as an opportunity for student growth through development theory. The templates serve as an influential coaching model for parents. **TRANSITION Room TBD**

**SESSION 26 • Emerging Directions in Legislation, Policy & Practice** • Beverlee Stafford, [National Rehabilitation Association](#) • Attendees will gain insight into the latest news and emerging directions in legislation, policy, and practices, including updates on WIA, the ADA, and other disability legislation. **LEGISLATIVE Room TBD**

**Hotel Accommodations starting at \$68!** • The American Club • Kohler, Wis.

**SESSION 27 • Ethics and Boundaries** • Linda Hedenblad, MSE, CRC, SIUC TACE, [Region V TACE Southern Illinois University](#) • Every day professionals are confronted with situations which test professional boundaries. How we define respectful boundaries in rehabilitation has been shaped by the civil rights movement of people with disabilities. We will examine professional boundaries using this historical perspective. Through case study and discussion we will evaluate the complexities of maintaining respectful boundaries with those we serve. **ETHICS Room TBD**

**SESSION 28 • Social Stories Workshop Part 1** • Carol Gray, [The Gray Center for Social Learning and Understanding](#) • Parents and professionals have used Social Stories™ for close to 20 years to effectively share social information with children, adolescents, and adults with autism spectrum disorders (ASD) and other social-communication delays and differences. Using lecture and case examples, this fast-paced presentation is the “Show and Tell” of Social Stories. While participants will not be learning to write a Social Story™, they will leave knowing what is – and what is not – a Social Story™. They will also be introduced to the research that is reflected in the updated criteria that define each Story, with plenty of examples of recently published Stories that reflect this improved understanding. **HOT TOPICS Room TBD**

**THURS. MARCH 25 - 3:15 - 4:30PM**

**SESSION 29 • Stress Reduction for the Frontline Worker** • Dr. David Mays M.D., Ph.D. • This session will deal with stress, burnout, and happiness from a scientific perspective. Learn about stress and what it does to the body, and six factors that help you identify and modify burnout. More than just a review, this workshop will also provide all listeners with the secret(s) of happiness. **BEHAVIORAL HEALTH Room TBD**

**SESSION 30 • The Veterans Administration Program for Evidence-Based Practice in Supported Employment** • Jackie Bethany, Ph.D.; Theresa Drewniak, Ph.D.; Erin Forgy [Veterans Industries](#) • The Compensated Work Therapy/Supported Employment (CWT/SE) programs at Veterans Health Administration sites are helping Veterans obtain and maintain competitive employment in the community. These Veterans are leading healthy lives, with overall improved psychosocial functioning. Session attendees will learn how to implement the supported employment model to help individuals with serious and persistent mental illness work in the community. **EMPLOYMENT Room TBD**

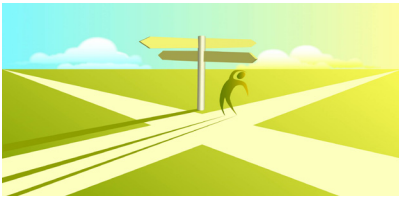
**SESSION 31 • Employment Law 101 - What a New Supervisor Needs to Know** • Thomas Mackenzie, [Lindner & Marsack, S.C.](#) • An introduction to the various state and federal laws that govern the workplace. This interactive program will use case studies to address “real life” scenarios that confront supervisors on a day-to-day basis. The program is designed to allow a supervisor to avoid legal pitfalls and is perfect for the new supervisor or a more experienced supervisor looking for a refresher. **MANAGEMENT Room TBD**

**SESSION 32 • The Updated Wisconsin Disability Guide: Helping People with Disabilities Prepare for Postsecondary Education and Training** • Tom Heffron, [Wisconsin Technical College System](#); Steve Gilles, [DPI](#); Rivi Hatt, [Lakeshore Technical College](#); Liz Kennedy, [Sauk Prairie School District](#) • The WI Postsecondary Guide to Disability Documentation (2006) was updated in 2009 by a workgroup of K-12 and CESA educators, Parent Educators, Postsecondary representatives from WTCS, UWS, and Independent Colleges, and WTCS Office and DPI. The Guide describes applicable laws, what is disability documentation and how it used, helpful hints on how to obtain proper documentation, elements of documentation of disability, websites and resources, and Summary of Performance documents. **TRANSITION Room TBD**

**SESSION 33 • Update on 14 (c)** • Charles Harles, [Harles & Associates](#) • This session will concentrate on increased scrutiny by the US Department of Labor, and what are they looking for in investigations that they have not in the past. There will also be a discussion of Congressional efforts to limit or possibly eliminate Sec. 14(c). Since the Senate hearing was held on violations of 14(c) regulations, a group of disability policy experts and advocates have been working towards a consensus on employment policy issues. This session will provide an update on those efforts. **LEGISLATIVE Room TBD**

**SESSION 34 • Ethics Open Forum** • Linda Hedenblad, MSE, CRC, SIUC TACE, [Region V TACE Southern Illinois University](#) • Participants will explore the ethical issues of working in transition, learn individual issues related to ethics and transition, and explore case studies that illustrate the subtleties of ethical issues.

**SESSION 35 • Social Stories Workshop Part 2** • Carol Gray, [The Gray Center for Social Learning and Understanding](#) • This session continues the learning opportunities about autism spectrum disorder (ASD) from Part 1 of the workshop (session #28). Attendees will learn what is – and what is not – a Social Story™; Understand how recent research is reflected in the approach today; and apply this information to benefit people with ASD. **HOT TOPICS Room TBD**



# 2010 Rehabilitation & Transition Conference

Today's challenges, tomorrow's choices

March 24 - 26



## FRIDAY, MARCH 26 AGENDA

7:30 - 8:30 AM **Registration & Continental Breakfast - Great Lakes Foyer**

8:30 - 10:00 AM **Concurrent Educational Sessions & Room Locations**

**Register online [www.rfw.org](http://www.rfw.org)**

10:15 - 11:45 AM **Concurrent Educational Sessions & Room Locations**

12:00 - 2:00 PM **Closing Session, Lunch, Door Prizes!  
"Monkey Business" Comedy Improv Troupe, Great Lakes Ballroom**

### 8:30 - 10:00 AM FRIDAY MARCH 26 - CONCURRENT SESSIONS

**SESSION 36 • Google, Skype, Ning, and other Technology Things** • Stacey Mochnick, Theresa Kulow, [Employment Resources, Inc.](#); Deb Wisniewski, [Pathways to Independence](#) • Social networking tools have caused a shift in the approach used to create collaborative working, learning, and networking environments. Join us for a panel discussion of experiences and demonstrations of popular social networking tools to enhance your communication methods. **MANAGEMENT Room TBD**

**SESSION 37 • How to Develop Vocational Skills Using An Entrepreneurial Model** • John Hough, Steve Kostka, Arrowhead High School; Lynn Goeden-Hough, WCSEC • Learn how to set up an in-school business that incorporates education, vocational, and technology skills, and related services such as speech and language, orientation and mobility. Using an entrepreneurial model, the Arrowhead High School CD Program has established an integrated vocational training program by creating two nationally recognized student-run businesses - Cafe Arrowhead and Arrowhead Manufacturing. **TRANSITION Room TBD**

**SESSION 38 • Medicaid Purchase Plan (MAPP Program Overview)** • Stephanie Drum, Megan Fowler, [Employment Resources, Inc.](#) • Get up to speed on information about the Medicaid Purchase Plan (MAPP). This session will highlight: non-financial and financial eligibility criteria, Independence Accounts, the work exemption, Health Insurance Premium Payment (HIPP), and the Health and Employment Counseling (HEC) programs. Participants will also learn about the MAPP/HEC Specialists' role and receive contact information for the MAPP/HEC Specialists. **LEGISLATIVE Room TBD**

**SESSION 39 • Avoiding Vendor Benders: How NOT to Get the Wrong Equipment** • Cindi Pichler, [Independence First](#); Laura Plummer, [University of Wisconsin-Stout](#) • People with disabilities can often benefit from using adaptive equipment to increase independence, but how do funding sources know if the equipment they're purchasing will meet the consumer's needs? Many equipment vendors are unregulated, however there are standards to be considered a "good" vendor, and the same goes for assessments. Learning best practice standards will help service providers and consumers identify good resources for obtaining the right adaptive equipment. **HOT TOPICS Room TBD**

### FRI. MARCH 26 - 10:15 - 11:45 AM

**SESSION 40 • Wisconsin Certified Peer Specialists Program - Improving Recovery Outcomes** • Alice Pauser, [Wisconsin Certified Peer Specialist](#) • 2010 marked the first state exams to become a Wisconsin Certified Peer Specialist (WICPS) to assist on consumer treatment and recovery teams. Attendees to this session will learn how to become a WICPS, and how employers and consumers benefit from having WICPS as part of successful mental health recovery outcomes. **BEHAVIORAL HEALTH Room TBD**

## 10:15 - 11:45 PM FRIDAY MARCH 26 - CONCURRENT SESSIONS

**SESSION 41 • PERC** • Mary Beck, Tammy Liddicoat, Employment Resources, Inc. • Paths to Employment Resource Center (PERC) is a training and technical assistance center developed through a partnership between UW-Madison, Stout Vocational Rehabilitation Institute, Employment Resources Inc. and the Department of Health Services' Pathways to Independence. Attendees will learn PERC's mission to provide education, advocacy, technical assistance and resources to increase integrated employment for persons with disabilities in Wisconsin's family care system. EMPLOYMENT **Room TBD**

**SESSION 42 • Tools for Greater Efficiency & Growing Contract Business - 5S, Standardized Work and Eureka Winning Ways** • Aaron Bialzik and Kelly Sullivan, [Northwest Manufacturing Outreach Center](#), University of Wisconsin-Stout • This session will explain how rehabilitation work centers have become modern facilities that are partnering with industry to provide employment opportunities to people with disabilities. MANAGEMENT **Room TBD**

**SESSION 43 • Leadership & Effective Transition Planning** • Steve Gilles, DPI; Nancy Chartier, Rice Lake Schools; Chris Jackson, Wauwatosa School District • Learn effective transition planning best practices, and how to meet compliance requirements; how to write effective and measurable post-secondary goals; examples of local district IEPs; transition requirements related to employment, post-secondary education, training, independent living, and much more. TRANSITION **Room TBD**

**SESSION 44 • [The Wisconsin Quality Home Care Authority](#)** • Gail Propsom, DHS • The 2009 - 2011 Wisconsin State Budget authorized the creation of the WQHCA, which will manage a registry of home care workers. The bill also permitted the registry to be accessible to unions wishing to organize home care workers. This session will provide information about the legislation and implementation of the program. LEGISLATIVE **Room TBD**

**SESSION 45 • Going to College with Super Seniors** • Fred Swanson, West High School, Madison, Wis.; Kevin Carini, MATC; Deb Trcka, Sheboygan Area Independent Living Program; Rivi Hatt, Lakeshore Technical College • For a number of 18 to 21 year olds, going to college might be impossible without the array of supportive services only available in high school. Learn how two high schools (Sheboygan and Madison West) have worked together with local technical colleges to support students with disabilities begin their college careers. Find out how it's done and who benefits. ETHICS **Room TBD**

**SESSION 46 • Bringing You Protected Tomorrows - A Journey Through an Eight-Step Special Needs Planning Program** • Mary Anne Ehlert and Christine Rondeau, [Protected Tomorrows](#) • Learn from case study examples how an advocacy firm enhances the lives of people with special needs through a comprehensive life planning process which addresses the needs of individuals with developmental disabilities, mental illness, physical disabilities, or cognitive and neurological diseases in the following areas: education; residential; financial; legal; government benefits; employment; recreation. HOT TOPICS **Room TBD**

**QUESTIONS?** Contact Tom Behnke (608) 244-5310  
or email [tbehnke@rfw.org](mailto:tbehnke@rfw.org)

[Register online](#)